



"THE VILLAGE  IS BACK"

# ELMS

FAMILY & COMMUNITY SERVICES

# IMPACT REPORT

## 2024-25



## PROJECTS & INITIATIVES

- Customer Relationship Management System project - Phase 2
- Google Ads project
- STEM initiatives & programs
  - Data Detectives Club
  - 8-week STEM robotics
- Senior & Community Food Distribution programs

## DETAILS

Launched phase 2 of the organization's customer relationship management system and Google Ads projects to more effectively manage customer relationships with donors, prospective donors, volunteers, and community partners, and enhanced public awareness of the organization.

Led STEM initiatives and programs for youth in grades 3-8 for early exposure opportunities for youth in low-income communities.

Launched senior and community distribution programs to address food insecurities in communities we serve.

## TOTAL REVENUE

**\$14,600**  
GRANTS

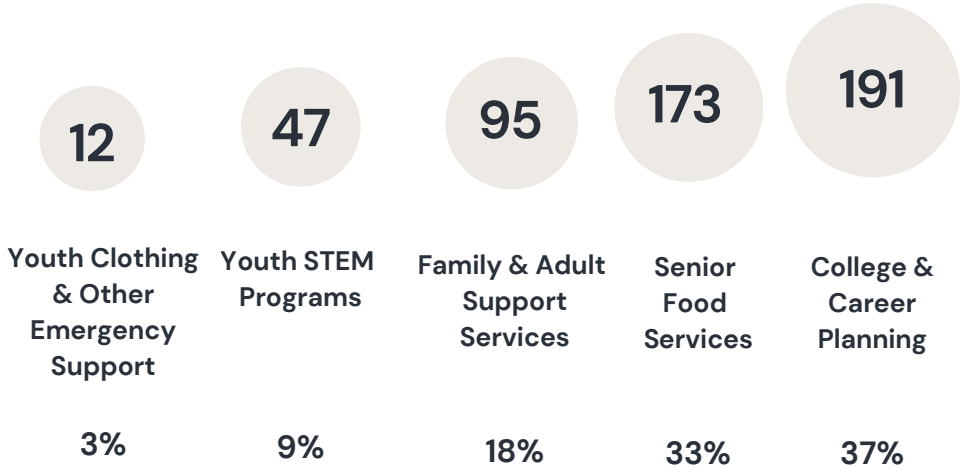
**\$19,098**  
DONATED SERVICES

**\$7,525**  
DONATED GOODS

**\$1,866**  
CORPORATE DONATIONS

**\$1,965**  
INDIVIDUAL & BOARD  
DONATIONS

**\$4,860**  
OTHER



## PROGRAM & SERVICE OUTCOMES

## Total Expenditures

\$27,194 (Operations) represents 55% of total expenditures  
 \$22,309 (Programs) represents 45% of total expenditures

## ACKNOWLEDGMENTS

Elms Family and Community Services extends sincere gratitude to our partners, supporters, and volunteers whose commitment made our 2025 impact possible. Your continued collaboration and generosity have strengthened our ability to serve individuals and families across Macomb and Wayne Counties and expand opportunities for those in need.

Thank you for your generosity and continued support,

EFCS Board of Directors

## **Executive Summary**

Elms Family & Community Services, hereinafter referred to as the “EFCS” is a 501(c)(3) nonprofit community organization established in 2018, currently located in Clinton Township, Michigan. We provide support services to youth, adults and families in Macomb and Wayne County who are faced with social, economic, educational and other barriers, to assist in improving their overall quality of life. Because EFCS is a nonprofit organization, volunteer staff are willing and committed to giving their time to help the organization, allowing it to become successful.

The success of the organization and its outreach is dependent upon financial and program support from corporations, sponsors, donations, grants and income from fundraising revenue.

## **Vision**

To rebuild, strengthen, and empower youth, adults, and families in underserved communities by bringing the village back through connection, support, and opportunity.

## **Mission**

Elms Family and Community Services strive to improve the quality of life for youth, adults, and families in low-income and ALICE households through equitable access to services, resources, and supportive programs.

## **Impact Summary**

In 2025, Elms Family and Community Services made a meaningful impact across Macomb and Wayne Counties by delivering comprehensive programs and essential support services to individuals and families in need, serving 500+ youth, seniors, and families. Through its commitment to serving low-income and ALICE households, the organization provided STEM programming to students in grades 3–8 and delivered college and career planning support to youth ages 14–24, helping to build strong educational and workforce pathways.

Efforts to address basic needs were equally impactful. The organization distributed food to seniors and families to help address food insecurities, provided clothing to children in low-income families, emergency assistance support, case management services to families in need of other support. We supported youth ages 0–17 with toys, clothing, other items on their blessing lists, and holiday meals for adoptees and their families through the organization’s Adopt-a-Family program and partner Chrysler Local 1700’s Giving Tree program, ensuring that no child was without gifts or families without meals for the Christmas.

Collectively, these efforts strengthened communities throughout Macomb and Wayne Counties and extended support to surrounding families in need. Through intentional programming, outreach, and partnerships, Elms Family and Community Services continue to uplift individuals, promote stability, and create pathways for long-term success.

# Key Metrics

## # of Grants by Funder Type

College Access Networks: 2  
 Foundations: 2  
 Retail: 2  
 STEM: 2

\*Volunteer Retention Rate: 21%

\*Donor Retention: 15%

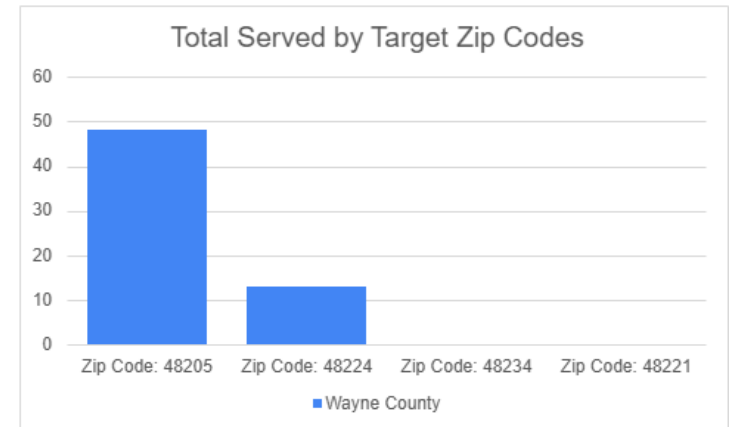
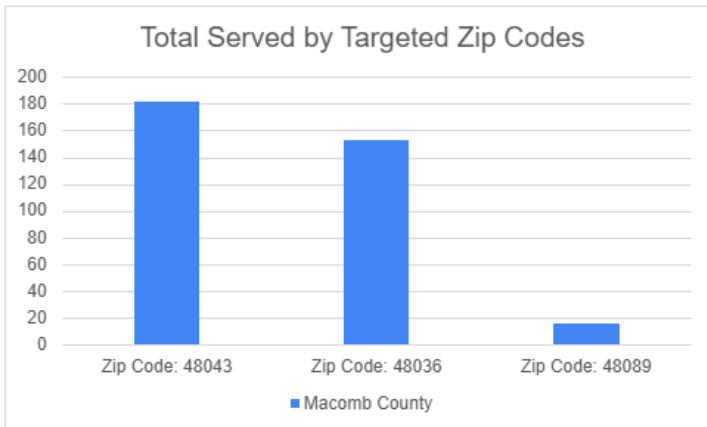
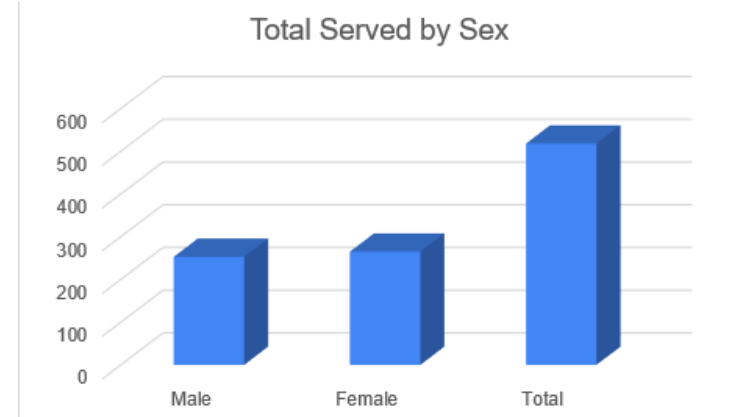
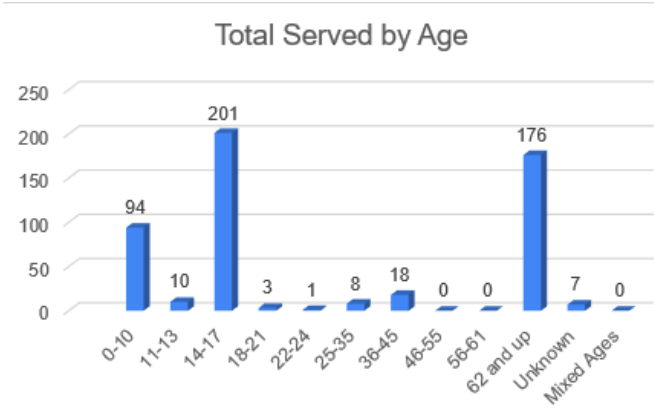
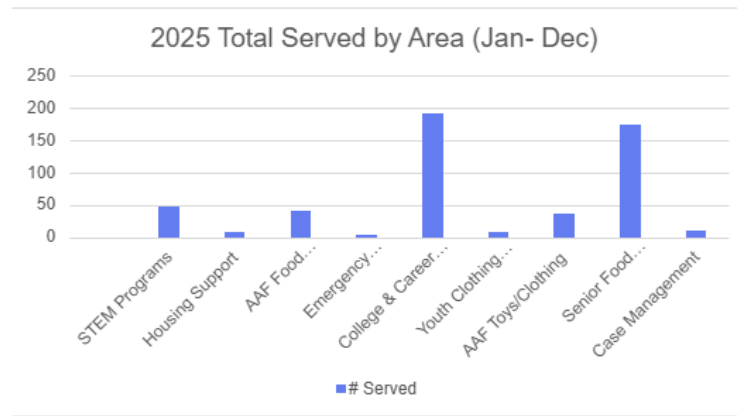
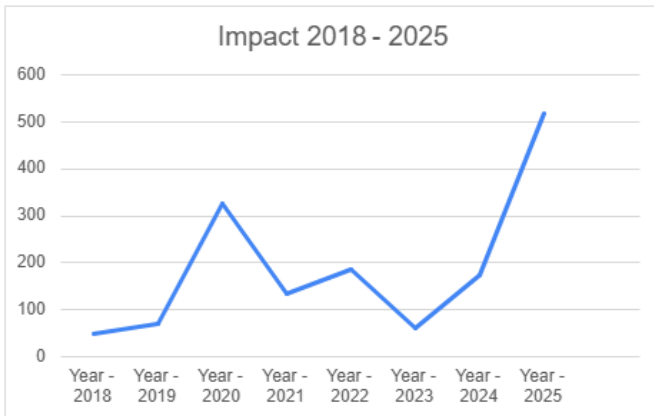
## # of Donors by Type

Individual: 10  
 Executive/Board: 3  
 Corporations: 3

\*Annual Campaign Conversion Rate: 14%

\*Refer to current and future engagement and retention strategies on page 5.

## Programs & Service Outcomes



## **Capacity Building**

The organization made significant strides in strengthening its organizational capacity, with critical support from Advancing Macomb, in Macomb County through its first Nonprofit Accelerator Cohort and subsequent capacity building grant. This support enabled the organization to work towards strengthening its overall effectiveness in board governance, marketing, storytelling, development, board recruitment, and other critical areas. Additionally, the support enabled the organization to expand its reach, serving more than 500 youth, adults, and seniors, from low-income and ALICE households in 2025. Key advancements included board governance sessions, the growth of volunteerism through the organization's college intern program, and technology support for the intern program. The organization also launched Phase 2 of its customer relationship management system to enhance engagement with donors, partners, clients, and volunteers, and the implementation of improved marketing strategies to more effectively target and reach priority populations. Collectively, these efforts have positioned the organization for sustained growth and deeper community impact.

## **Increased Collaborations**

Elms Family and Community Services has strengthened its commitment to collaborative impact by deepening partnerships with key community stakeholders, including a mental health provider for family and adult referrals for mental health services, local food banks to assist in addressing food barriers for seniors and families, high schools, libraries, colleges and universities for in-school and community-based early college and career planning support and college field trips. Through its collaboration with MSU 4-H and funding through STEM grants, the organization implemented community initiatives and STEM programming for students in grades 3–8 from low-income and ALICE communities, fostering early interest and skill development in science and technology.

The organization's ongoing partnership with Macomb Community College in Macomb County supported dual enrollment opportunities for high school students, enabling them to participate in early college coursework and take meaningful steps toward earning college credits and degrees following graduation. In addition, the organization leveraged its community outreach efforts to promote and connect students to high school internship opportunities, further enhancing real-world learning experiences and career readiness. These collaborative efforts have played a vital role in advancing equitable access, strengthening educational pathways, and improving long-term outcomes for the communities we serve.

## **Strengthening Engagement and Retention**

Elms Family and Community Services is prioritizing strategies to improve its annual campaign conversion rate, donor retention, and volunteer engagement. In response to lower volunteer retention driven by short-term internship requirements, the organization is shifting focus toward recruiting long-term volunteers while increasing engagement with existing periodic volunteers through consistent communication and meaningful service opportunities. Tools such as the United Way & Shared Detroit volunteer portals, internal tracking resources, along with regular phone check-ins and email reminders, will support stronger volunteer coordination and retention.

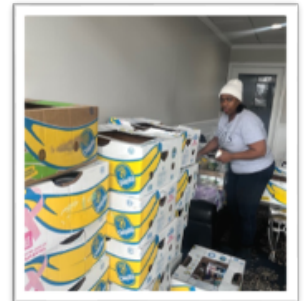
To enhance governance and leadership continuity, Board of Directors terms have been extended from two to three years, supported by strengthened recruitment strategies and the implementation of new board onboarding and annual governance training sessions. Additional strategies include improving donor stewardship through personalized outreach and impact reporting, expanding recurring giving opportunities, and increasing campaign visibility through targeted marketing and community partnerships. Collectively, these efforts are designed to build deeper relationships, strengthen organizational stability, and sustain long-term impact.

## Programs and Services:

Through community outreach, existing and re-engaged partnerships, and strategic initiatives, Elms Family and Community Services expanded its reach and capacity to deliver a comprehensive range of programs and supports, including:

- **Senior Services:** Food distribution program launched in partnership with Gleaners Food Bank to address food insecurities for seniors in Macomb County: **173 food boxes distributed**
- **Youth Clothing & Other Emergency Support:** Support youth and parents in low-income households with uniforms, clothing, and emergency food/household supplies: **12 youth/families served**

**Family Services:** Holistic support for families through the organization's direct services, its annual Adopt-a-Family Program for Christmas toys, clothing, other items, and food support, and newly launched community food distribution program: **95 youth/parents served**



- **Youth Programs & Services:**

- **Early College exposure:** Expanded in-school and community-based learning for early career and college planning and college field trips for youth ages 14-24: **191 youth served**
- **STEM exposure:** Launched an 8-week STEM series and 1 pilot for a Data Detectives Club, exposing youth in grades 3-8 to science, technology, and mathematics career areas: **47 youth served**



## She committed and she conquered!

Cheyenne, a high school junior at Mount Clemens High School and dual enrollment student at Macomb Community College, joined EFCS in April of 2024 at our *Creating Your Path College* event at that Mount Clemens Public Library.

During the summer of 2024, she and her mom also joined EFCS for its 2024 summer college planning support for high school students at the Mount Clemens Public Library. Youth learned what colleges look for in admissions applications, how to be competitive for college admissions, what to research when considering their colleges, evaluating financial aid award packages, when to apply for scholarships and many other helpful tips for successful transitions from high school.

During Cheyenne’s senior year of high school, EFCS supported Cheyenne and her mom with questions that they had regarding the FAFSA process, scholarships opportunities, and educated them on other scholarships available in Michigan such as the Michigan Achievement, Tuition Incentive Program, etc. Cheyenne completed scholarship applications, she and her mom completed the FAFSA process, and Cheyenne submitted college applications to her top schools of choice.

Oakland University is where Cheyenne was most interested in attending. She applied!

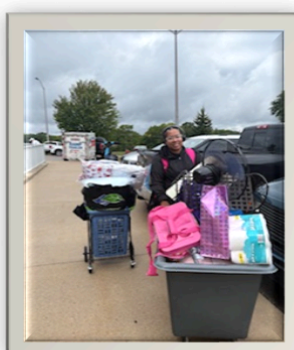
### Success at its best!!

Cheyenne graduated from Mount Clemens High School as one of the top in her class. She was admitted to Oakland University’s Honors College with a great financial aid package and is doing great!! Cheyenne, like many students had a goal and we are grateful to have supported her in reaching her goal. We look forward to sharing more stories like Cheyenne’s.

2024 EFCS Creating Your Path College Event at the Mount Clemens Public Library

Cheyenne and Mom at the Creating Your Path College Event (Junior Year)

2025 Cheyenne Moves to Oakland University Campus to begin her 4-year program!!



### Testimonials

Mrs. Elms has personally been such a key part of my success in applying and being accepted into one of my top choice universities. She worked with me one on one over the course of a few weeks during summer, chopping up the tedious and overwhelming process of getting ready for college into smaller, digestible sessions. The EFCS sessions were very well thought out and easy to follow. I’m glad I was able to get involved with them because I probably would’ve been very lost without the help. Thanks to Mrs. Elms and her program, I was able to not only get accepted early into my top choice, but with her advice on how to write an effective essay and how to find and apply for scholarships, I was able to essentially get my first year of college paid for. I am so grateful for all the help Mrs. Elms and the people at EFCS have given me.”

–Cheyenne J., 2025 Mount Clemens High School Graduate & Oakland University freshman

“My internship at Elms Family and Community Services has been incredibly insightful. I was able to learn valuable skills that helped me become a much more well-rounded professional as I explored different career paths. I also gained experience navigating different systems and software like Office 360, Google, Indeed, Office Suite and more.

It was truly a privilege being able to work by your side, thank you so much for this opportunity, and I can’t wait to come back in the fall!!!”

–Kamaria G., 2024 Graduate – Clintondale High School, 2025 Early College of Macomb Graduate and Michigan State University freshman

## Community Engagement & Outreach

Elms Family and Community Services strengthened its community presence through intentional outreach and re-engagement with key partners across Macomb and Wayne Counties. These efforts expanded the organization’s reach and increased access to critical resources for youth and families in underserved communities.

Strategic partnerships included collaboration with community schools, recreation centers, public libraries and other community-based sites to enhance youth outreach initiatives to support youth and family engagement efforts to provide early college, certificate program, and career planning support to high school seniors to provide targeted FAFSA outreach and completion support for 2025 high school graduates.

These additional outreach and engagement efforts directly support Michigan’s 30 by 60 goal—a statewide initiative to ensure that 60% of working-age adults hold a postsecondary degree or credential by 2030. By increasing FAFSA completion and expanding access to college and career planning resources, Elms Family and Community Services is helping to build stronger educational pathways and contribute to the long-term economic mobility of the communities it serves.



As we reflect on our achievements and milestones of 2025, we are filled with gratitude for the collective efforts of our community partners, dedicated staff, generous donors, and passionate volunteers. Together, we have made significant strides towards our shared vision of empowering individuals and families, fostering resilience, and building a stronger, more vibrant community. Looking ahead, we are committed to building on this foundation of collaboration and innovation as we continue our mission to serve and support those in need. With determination and compassion as our guiding principles, we embark on the journey ahead, confident in our ability to create positive change and make a lasting impact.

Thank you for your unwavering support, dedication, and belief in the mission of Elms Family and Community Services. Together, we are truly making a difference!

Warm regards,  
Kimberly Elms, President & CEO